

PTS641 Series

SMT Top Actuated Switches



Specifications

Function	Momentary action
Contact Arrangement	1 make contact = SPST, N.O.
Terminals	G type for SMT
Packaging	Switches in reels of 1,500 pieces. Dimensions of reels according to EIA 481B External diameter 330 m

Mechanical Characteristics

Travel	0.20 mm \pm 0.15 mm for 160 & 250 gf 0.30 mm \pm 0.15 mm for 320 gf
Operating Life	200,000 cycles for 160 gf version 100,000 cycles for 250 gf & 320 gf versions
Operating Force	160 gf \pm 50 gf blue actuator 250 gf \pm 50 gf red actuator 320 gf \pm 80 gf black actuator

Electrical Characteristics

Max. Voltage	12 VDC
Max. Current DC	50 mA
Dielectric Strength	250 VA C (1mn)
Contact Resistance	100 m Ω
Insulation Resistance	\geq 100 M Ω
Bounce Time	< 5 ms

Description

The PTS641 series SMT top actuated switches are recognized in the home and garden equipment, white goods and metering industries for their responsiveness and reliability. Available in a 6.3 x 6.3mm footprint, in multiple heights and with a ground pin option, the PTS641 can help any product perform better than the competition.

Features & Benefits

- 6.3 x 6.3 mm footprint
- Multiple heights
- Ground pin option

Applications

- Metering
- White goods
- Home and garden equipment

Environmental Characteristics

Operating Temperature	-20°C to 85°C
------------------------------	---------------

Process

Soldering

This component is suited to the following methods:
Infrared Reflow Soldering in accordance with IEC61760-1

Notes:

Specifications listed above are for switches with standard options. For information on specific and custom switches, consult Customer Service Center. The PTS series is not certified for using in Automotive application and no PPAP. However, in the case of some automotive accessories and specific applications for 2 and 3 wheeled vehicles the PTS is widely used and very suitable. Please contact your local C&K representative to discuss your application and the best switch solution.

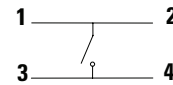
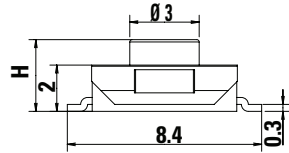
PTS641 Series

SMT Top Actuated Switches

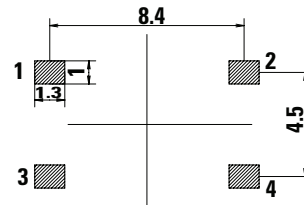
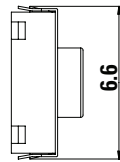
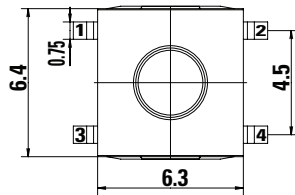


Dimensions

No Ground Pin H = 2.5, 3.1, or 3.4 mm

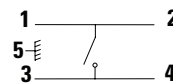
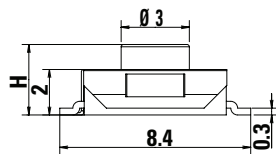


Schematic

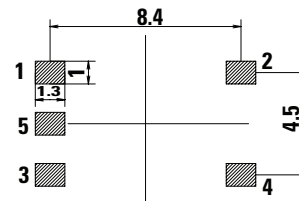
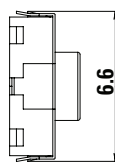
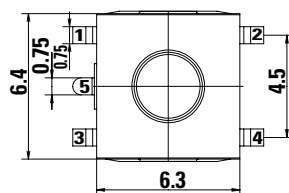


Recommended PCB Layout

Ground Pin H = 2.5, 3.1, or 3.4 mm



Schematic



Recommended PCB Layout

Ordering Number

Our easy build-a-switch concept allows you to mix and match options to create the switch you need. To order, select desired option from each category and place it in the appropriate box.

PTS641 - x - x - xx - SMTR2 - LFS

<p>Ground Pin</p> <p>S: No ground pin T: With ground pin</p>	<p>Actuation Force</p> <p>M: 180 gf K: 250 gf P: 320 gf</p>	<p>Body Type</p> <p>25: 2.5mm height 31: 3.1mm height 34: 3.4mm height</p>	<p>Packaging</p> <p>SMTR: Tape & Reel</p> <p>RoHS compliant, Silver plated</p>
---	--	---	---

Disclaimer Notice - Information furnished is believed to be accurate and reliable. However, users should independently evaluate the suitability of and test each product selected for their own applications. Littelfuse products are not designed for, and may not be used in, all applications. Read complete Disclaimer Notice at <http://www.littelfuse.com/disclaimer-electronics>.