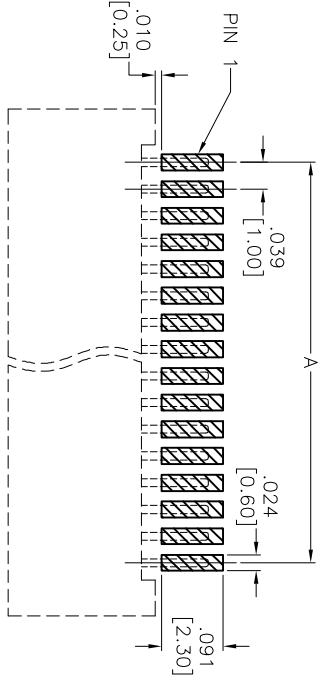
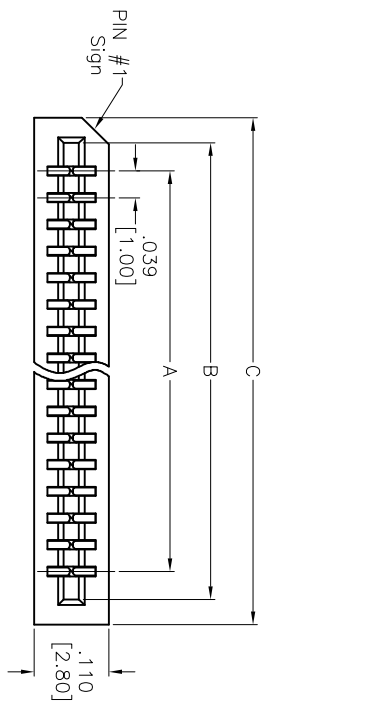
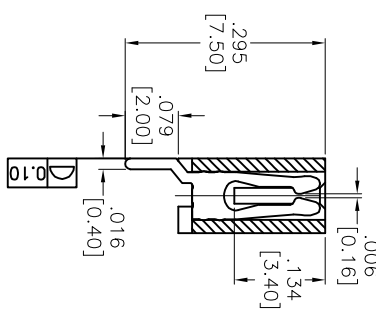
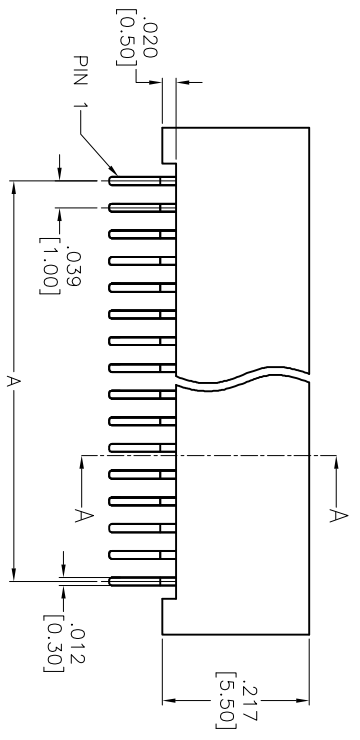
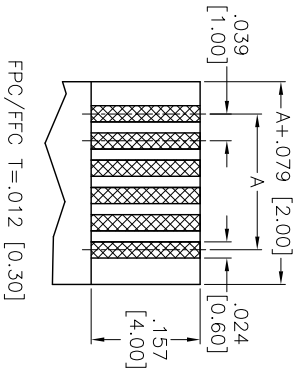


Rev	AWO #	Description	Date	Appr
-		RELEASED	6/22/15	

APPROVED: \_\_\_\_\_  
 DATE: \_\_\_\_\_ TITLE: \_\_\_\_\_



RECOMMENDED PCB LAYOUT



Positions: 2 thru 36  
 A = .039 [1.00] x No. of Spaces  
 B = A + .083 [2.10]  
 C = A + .157 [4.00]

SPECIFICATIONS:  
 Material: Insulator: Hi-Temp Thermoplastic, Glass reinforced, rated UL 94V-0  
 Insulator color: Black  
 Contacts: Copper Alloy  
 Plating: Tin over Copper underplate overall

Electrical:  
 Current rating: 1 Amps max  
 Insulation resistance: 30 mohms max initial  
 Dielectric withstanding voltage: 500 VAC for 1 minute  
 Operating temperature: -25°C to +85°C  
 Environmental: Lead free, RoHS compliant



**ADAM TECH**

909 Railway Avenue, Union, NJ 07083  
 Phone: 908-687-5000 Fax: 908-687-5710

LIF FLEX CIRCUIT CONNECTOR  
 SIDE ENTRY, SMT

UNLESS OTHERWISE SPECIFIED ALL DIMENSIONS ARE INCHES [MM] TOLERANCES EXCEPT AS NOTED		TITLE	
.X ± .10	ØXX ± .10	LIF FLEX CIRCUIT CONNECTOR	
.XX ± .020	ØXXX ± .015	SIDE ENTRY, SMT	
.XXX ± .015	ØXXXX ± .010		
APPROVALS		DATE	
DRAWN	AY	6/22/15	
CHECKED	AY1	6/22/15	
APPROVED		SIZE	REV.
		X	
PART NO. PCB-C5-XX-SA-SMT		SCALE: NTS	SHEET 1 OF 1
REF: S00763C			