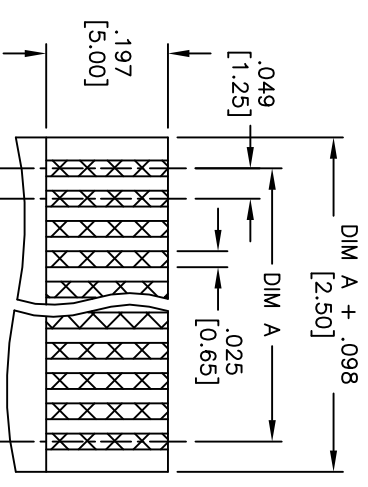
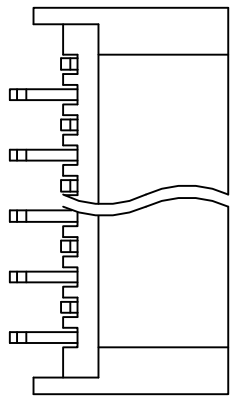
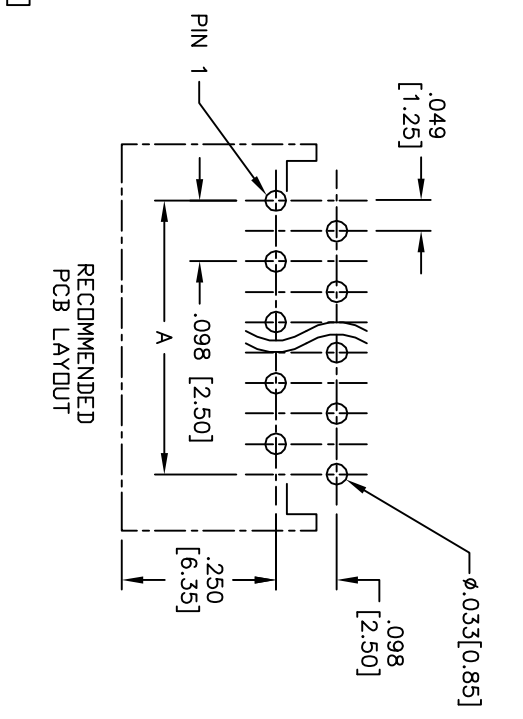
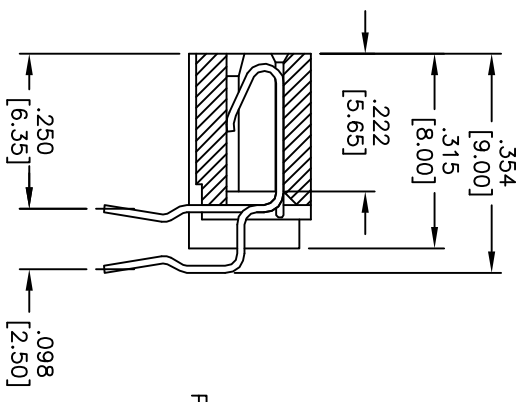
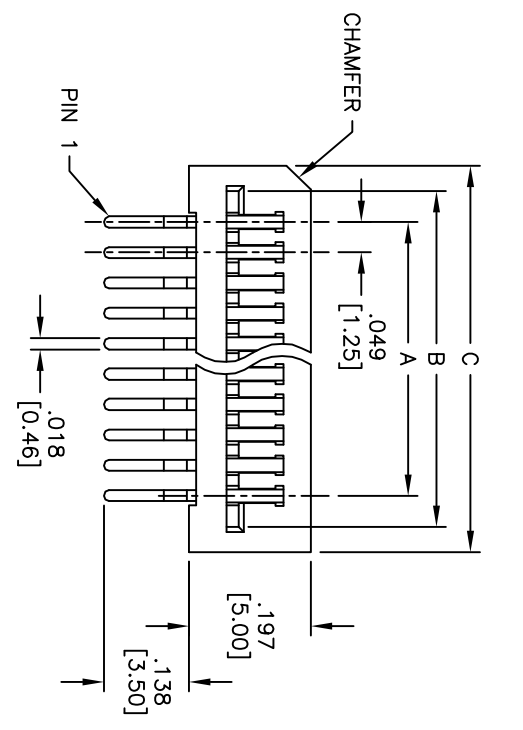


APPROVED: _____
 DATE: _____ TITLE: _____

Rev	AWO #	Description	Date	Appr
-		RELEASED	3/23/05	
A		REDRAWN	5/15/08	



Positions: 3 thru 30
 A = .049 [1.25] x No. of Positions -1
 B = A + .100 [2.55]
 C = A + .183 [4.65]

FPC/FFC THICKNESS
 .012 ±.002 [0.30 ±0.051]

SPECIFICATIONS:
 Material: Insulator: PBT, Glass reinforced, rated UL 94V-0
 Insulator color: Black
 Contacts: Phosphor Bronze
 Plating: Tin over Copper underplate overall
 Electrical: Operating voltage: 250 VAC RMS max
 Current rating: 1 Amp max
 Contact resistance: 25 mohms max initial
 Insulation resistance: 1000 Mohms min
 Dielectric withstanding voltage: 500 VAC for 1 minute
 Temperature Rating: Operating temperature: -55°C to +85°C
 Environmental: Lead free, RoHS compliant



UNLESS OTHERWISE SPECIFIED ALL DIMENSIONS ARE INCHES [MM]	
TOLERANCES: EXCEPT AS NOTED	
INCHES	HOLES
.X ±.10	Ø.X ±.10
.XX ±.020	Ø.XXX ±.015
.XXX ±.015	Ø.XXX ±.010
APPROVALS	DATE
DRAWN SS	3/23/05
CHECKED AY	7/28/10
APPROVED	

ADAM TECH
 909 Rahway Avenue, Union, NJ 07083
 Phone: 908-687-5000 Fax: 908-687-5710

TITLE: LIF FLEX CIRCUIT CONNECTOR
 SIDE ENTRY, 2.50 MM PCB ROW SPACING

SIZE	PART NO.	REV
X	PCB-B-XX-SA-25	A
REF: S00043T	SCALE: NTS	SHEET 1 OF 1