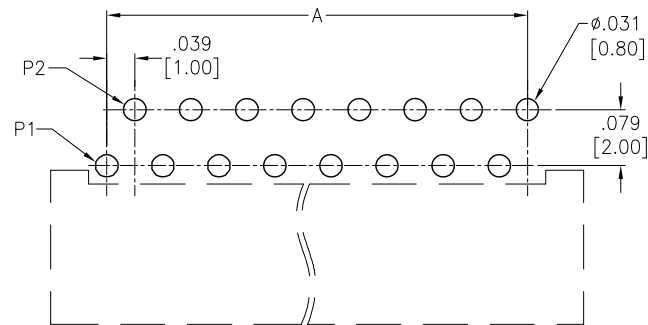
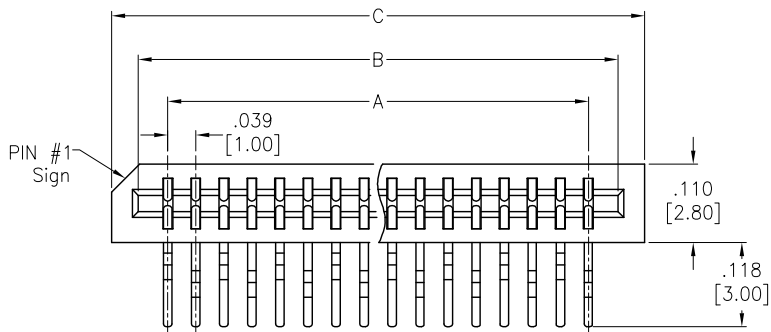


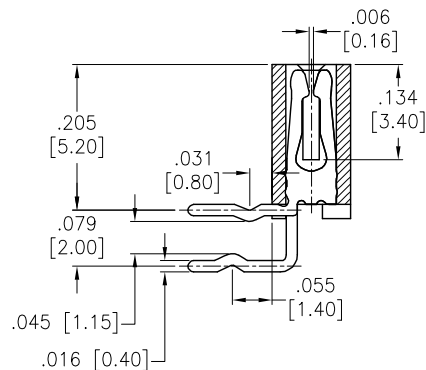
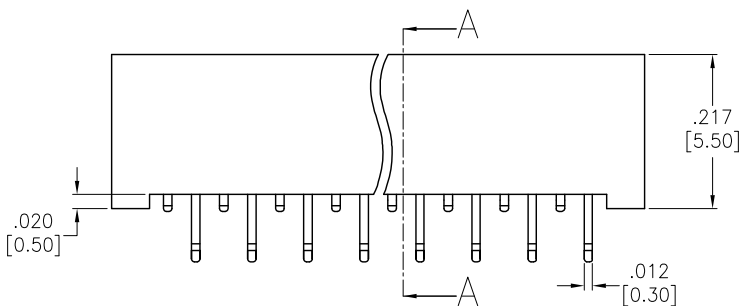
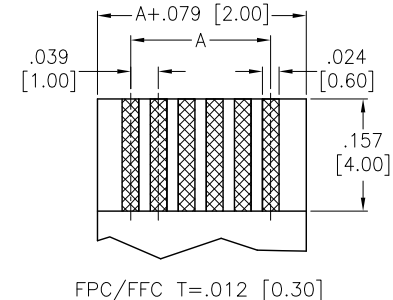
APPROVED: _____

DATE: _____ TITLE: _____

Rev	AWO #	Description	Date	Appr
-		RELEASED	12/10/04	
A		REDRAWN	2/6/15	AY/LL
B		UPDATE DRAWING	12/4/23	LH/LW



RECOMMENDED PCB LAYOUT



SPECIFICATIONS:

Material:
 Insulator: Hi-Temp Thermoplastic, rated UL 94V-0
 Insulator color: Black
 Contacts: Copper Alloy
 Plating:
 Tin over Nickel underplate overall
 Electrical:
 Current rating: 1 Amps max
 Contact resistance: 30 mohms max initial
 Insulation resistance: 500 Mohms min
 Dielectric withstanding voltage: 500 VAC for 1 minute
 Temperature Rating:
 Operating temperature: -25°C to +85°C
 Environmental:
 Lead free, RoHS compliant



Positions: 2 thru 36
 $A = .039 [1.00] \times \text{No. of Spaces}$
 $B = A + .083 [2.10]$
 $C = A + .157 [4.00]$

UNLESS OTHERWISE SPECIFIED ALL DIMENSIONS ARE INCHES [MM]. TOLERANCES: EXCEPT AS NOTED		
INCHES		HOLES
.X ± .10	∅X ± .10	
.XX ± .020	∅XX ± .015	
.XXX ± .015	∅XXX ± .010	
DRAWN	SS	12/10/04
CHECKED	AY	12/10/04
APPROVED		
THIS DRAWING CONTAINS INFORMATION THAT IS PROPRIETARY AND SHOULD NOT BE USED WITHOUT PRIOR WRITTEN PERMISSION FROM ADAM TECH		

ADAM TECH
 909 Rahway Avenue,
 Union, NJ 07083
 Phone: 908-687-5000
 Fax: 908-687-5710

TITLE		LIF FLEX CIRCUIT CONNECTOR SIDE ENTRY, 2.00 MM PCB ROW SPACING	
SIZE	PART NO.	REV.	
X	PCB-C-XX-SA-20	B	
REF:	S00165C	SCALE:	NTS SHEET 1 OF 1