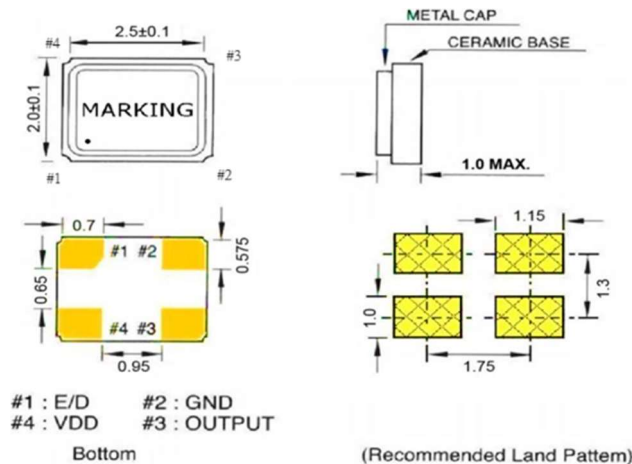


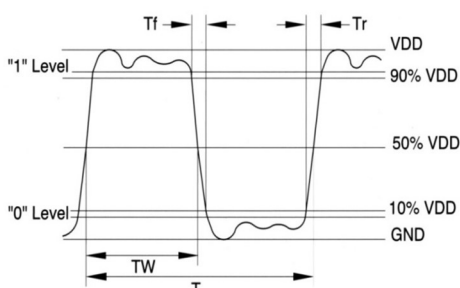
● SPECIFICATION

Model		OSC-S22 Series		
Frequency range		0.0625 ~ 160.000 MHz		
Storage temperature range		- 55°C ~ + 125°C		
Operation temperature range		- 20°C ~ + 70°C , - 40°C ~ + 85°C , - 40°C ~ + 125°C , specify		
Frequency stability		±10 ppm ~ ±100 ppm		
Power supply voltage: (5.0V DC available on request)		3.3V DC ±10%	2.5V DC ±5%	1.8V DC ±5%
Current consumption		0.0625-25.000 MHz:5 mA (max)	0.0625-25.000 MHz:5 mA (max)	0.0625-25.000 MHz:5 mA (max)
		25.001-50.000 MHz:12 mA (max)	25.001-50.000 MHz:10 mA (max)	25.001-50.000 MHz:8 mA (max)
		51.000-100.000 MHz:30 mA (max)	51.000-100.000 MHz:15 mA (max)	51.000-100.000 MHz:10 mA (max)
		101.000-160.000 MHz:40 mA (max)	101.000-160.000 MHz:20 mA (max)	101.000-160.000 MHz:15 mA (max)
Output level		C-MOS		
Load		15 pF		
Output voltage level		V _{OL} : 10% V _{dd} (max) / V _{OH} : 90% V _{dd} (min)		
Duty cycle		45% ~ 55% at 1/2 V _{dd}		
RISE / FALL TIME		6 nS (max)		
Phase Jitter		0.3 pS (typ)		
Startup time		1.000-32.000 Mhz:5 mS (max) , 32.100-160.000 MHz:10 mS (max)		
Enable Control Pad1	Enable Voltage High	70% V _{dd} (min)		
	Disable Voltage Low	30% V _{dd} (max)		
	Disable Current	10 uA (max)		
Aging		±3ppm / Year (max)		

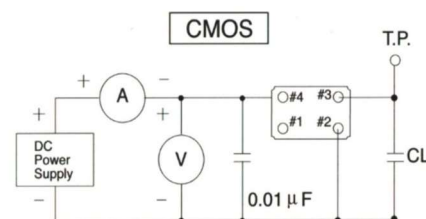
● DIMENSIONS (mm)



● OUTPUT WAVEFORM



● TEST CIRCUIT



*** Because S22 series has no by pass capacitor.
So, we recommend our customer to use capacitor