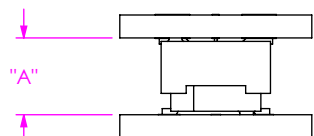
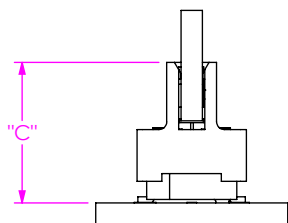


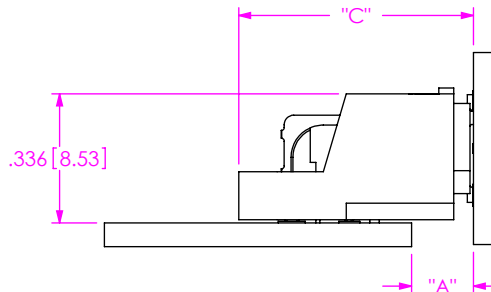
(FIGURE 1)
QTS MATED TO QSS



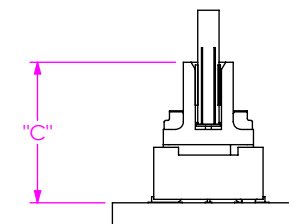
(FIGURE 2)
QTS MATED TO QSS-EM



(FIGURE 3)
QTS MATED TO QSS-RA



(FIGURE 4)
QTS-EM MATED TO QSS



	Fully Mated Board to Board Dimension ("A")	Max Board to Board Dimension ("A")	Fully Mated Connector to Connector Dimension ("B")	Max Connector to Connector Dimension ("B")	Fully Mated Connector to Board Dimension ("C")	Max Connector to Board Dimension ("C")	Min Contact Wipe	Max Contact Wipe
Fig. 1) QTS / QSS	SEE TABLE 2	TABLE 2 DIMENSION + 0.007 [0.18]	N/A	N/A	N/A	N/A	0.015 [0.38]	0.022 [0.60]
Fig. 2) QTS / QSS-EM	N/A	N/A	N/A	N/A	SEE TABLE 3	TABLE 3 DIMENSION + 0.007 [0.18]	0.015 [0.38]	0.022 [0.60]
Fig. 3) QTS / QSS-RA	SEE TABLE 4	TABLE 4 DIMENSION + 0.007 [0.18]	N/A	N/A	SEE TABLE 4	TABLE 4 DIMENSION + 0.007 [0.18]	0.015 [0.38]	0.022 [0.60]
Fig. 4) QTS-EM / QSS	N/A	N/A	N/A	N/A	0.366 [9.30]	0.373 [9.47]	0.015 [0.38]	0.022 [0.60]
Fig. 5) QTS-EM / QSS-EM	N/A	N/A	0.532 [13.51]	0.539 [13.69]	N/A	N/A	0.015 [0.38]	0.022 [0.60]
Fig. 6) QTS-EM / QSS-RA	N/A	N/A	0.782 [19.86]	0.789 [20.04]	N/A	N/A	0.015 [0.38]	0.022 [0.60]
Fig. 7) QTS-RA / QSS	0.145 [3.68]	0.152 [3.86]	N/A	N/A	0.556 [14.12]	0.563 [14.30]	0.015 [0.38]	0.022 [0.60]
Fig. 8) QTS-RA / QSS-EM	N/A	N/A	0.722 [18.34]	0.729 [18.52]	N/A	N/A	0.015 [0.38]	0.022 [0.60]
Fig. 9) QTS-RA / QSS-RA	0.016 [0.41]	0.023 [0.58]	0.972 [24.69]	0.979 [24.87]	N/A	N/A	0.015 [0.38]	0.022 [0.60]

		QSS LEAD STYLE
		-01
QTS LEAD STYLE	-01	0.197 [5.00]
	-02	0.315 [8.00]
	-03	0.433 [11.00]
	-04	0.630 [16.00]
	-05	0.748 [19.00]
	-06	0.866 [22.00]

		QSS-EM LEAD STYLE
		-01
QTS LEAD STYLE	-01	0.366 [9.30]
	-02	0.484 [12.30]
	-03	0.602 [15.30]
	-04	0.798 [20.27]
	-05	0.916 [23.27]
	-06	1.034 [26.27]

		QSS-RA LEAD STYLE	
		-01	
		A	B
QTS LEAD STYLE	-01	0.071 [1.80]	0.616 [15.65]
	-02	0.189 [4.80]	0.734 [18.65]
	-03	0.307 [7.80]	0.852 [21.65]
	-04	0.503 [12.77]	1.048 [26.62]
	-05	0.621 [15.77]	1.186 [29.62]
	-06	0.739 [18.77]	1.284 [32.62]

DO NOT SCALE FROM THIS PRINT

NOTES:

1. DRAWING ILLUSTRATES EFFECTIVE MATING RANGE OF CONNECTORS IN VARIOUS CONFIGURATIONS.
2. ALTHOUGH MAX DIMENSIONS ARE LISTED SAMTEC RECOMMENDS FULLY MATING COMPONENTS.
3. ALL DIMENSIONS BASED ON NOMINAL VALUES FOR SAMTEC RECOMMENDED PCB LAYOUTS.

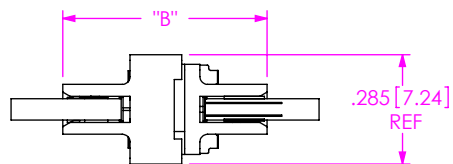
PROPRIETARY NOTE

THIS DOCUMENT CONTAINS INFORMATION CONFIDENTIAL AND PROPRIETARY TO SAMTEC, INC. AND SHALL NOT BE REPRODUCED OR TRANSFERRED TO OTHER DOCUMENTS OR DISCLOSED TO OTHERS OR USED FOR ANY PURPOSE OTHER THAN THAT WHICH IT WAS OBTAINED WITHOUT THE EXPRESSED WRITTEN CONSENT OF SAMTEC, INC.

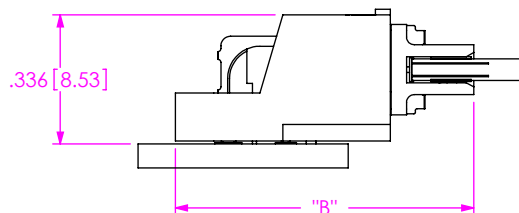


520 PARK EAST BLVD, NEW ALBANY, IN 47150
PHONE: 812-944-6733 FAX: 812-948-5047
e-Mail info@SAMTEC.com code 55322

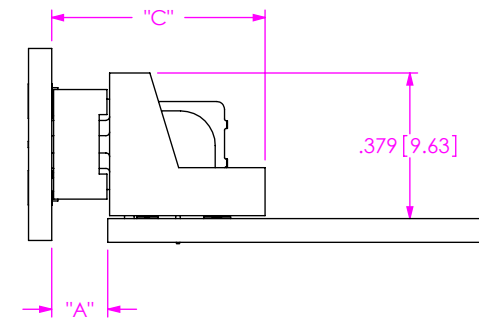
(FIGURE 5)
QTS-EM MATED TO QSS-EM



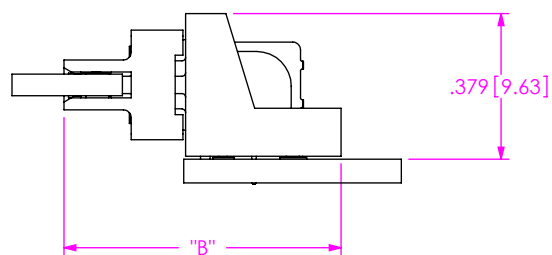
(FIGURE 6)
QTS-EM MATED TO QSS-RA



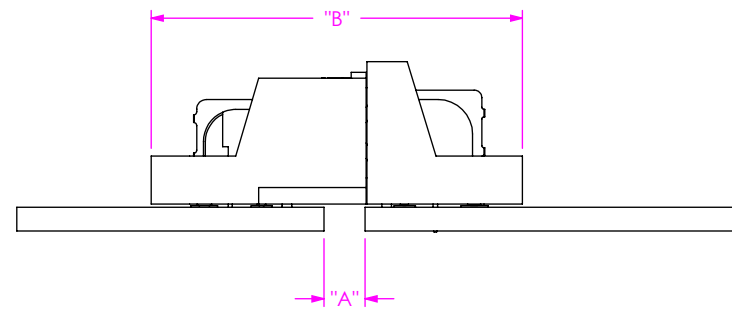
(FIGURE 7)
QTS-RA MATED TO QSS



(FIGURE 8)
QTS-RA MATED TO QSS-EM



(FIGURE 9)
QTS-RA MATED TO QSS-RA



PROPRIETARY NOTE

THIS DOCUMENT CONTAINS INFORMATION CONFIDENTIAL AND PROPRIETARY TO SAMTEC, INC. AND SHALL NOT BE REPRODUCED OR TRANSFERRED TO OTHER DOCUMENTS OR DISCLOSED TO OTHERS OR USED FOR ANY PURPOSE OTHER THAN THAT WHICH IT WAS OBTAINED WITHOUT THE EXPRESSED WRITTEN CONSENT OF SAMTEC, INC.



520 PARK EAST BLVD, NEW ALBANY, IN 47150
PHONE: 812-944-6733 FAX: 812-948-5047
e-Mail info@SAMTEC.com code 55322