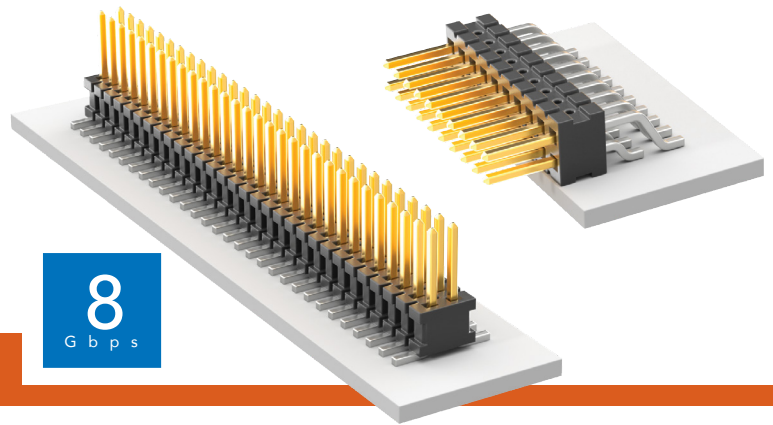


SURFACE MOUNT MICRO HEADER

(1.27 mm) .050" PITCH • FTSH SERIES



FTSH

Board Mates:

CLP, FLE

Cable Mates:

FFSD, FFTP

SPECIFICATIONS

Insulator Material:

Black Liquid Crystal Polymer

Terminal Material:

Phosphor Bronze

Plating:

Sn or Au over

50 μm (1.27 μm) Ni

Operating Temp Range:

-55 °C to +125 °C

Current Rating (FTSH/CLP):

3.4 A per pin

(2 pins powered)

Current Rating (FTSH/FLE):

2.9 A per pin

(2 pins powered)

Voltage Rating:

280 VAC/396 VDC

PROCESSING

Lead-Free Solderable:

Yes

SMT Lead Coplanarity:

-MT & -DV Tail Option:

(0.10 mm) .004" max (02-25)

-MT & -DH Tail Option:

(0.15 mm) .006" max (26-50)*

*(.004" stencil solution

may be available; contact

ipg@samtec.com)

ALSO AVAILABLE

Contact Samtec

Molded Pick & Place pads

Latches

Other platings



Notes:

Severe Environment Testing qualified; aligns with MIL-DTL-55302. Visit samtec.com/set

Some sizes, styles and options are non-standard, non-returnable.

See SFM/TFM for positive alignment feature.

FTSH	1	NO. PINS PER ROW	LEAD STYLE	PLATING OPTION	TAIL OPTION	OPTION	FLEX SHROUD OPTIONS	OTHER OPTIONS
------	---	------------------	------------	----------------	-------------	--------	---------------------	---------------

02 thru 50

-01 = (3.05 mm) .120" Post (Mates with FFSD)

-02 = (1.91 mm) .075" Post (Mates with FLE)

-03 = (1.65 mm) .065" Post (Mates with CLP-D)

-04 = (3.81 mm) .150" Post (Mates with CLP-DH)

-05 = (4.32 mm) .170" Post (Mates with CLP-BE)

-F = Gold flash on post, Matte Tin on tail

-L = 10 μm (0.25 μm) Gold on post, Matte Tin on tail

-DV = Double Vertical

-DH = Double Horizontal (Styles -01, -02 & -04 only)

-MT = Mixed Technology (Styles -01, -02 & -04 only)

Leave Blank for -DH & -MT

-"XXX" = Polarized Position (Specify position of omitted pin) (Not available with -EX options)

(Style -02 & -03 only, -DH & -MT not available) 9 pins/row minimum (Other positions available. Call Samtec.)

-ES = End Shroud

-EC = End Shroud with Locking Clip (Manual placement required)

-EP = End Shroud with Guide Post

-EL = End Shroud with Board Lock (Boards are positively locked and cannot be unmated)

-EJ = Ejector Shroud (Style -01 only) -DH & -MT not available 10 pins/row minimum 25 pins/row maximum

-K = Keying Shroud for mating with FFSD (Style -01 only, 05 thru 25 pins/row only. 13, 17, 20 & 25 only with -EJ option) (-DV only)

-A = Alignment Pin (-DV 3 positions minimum) (-DH 5 positions minimum) (Metal or plastic at Samtec discretion)

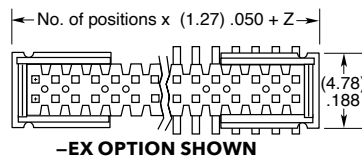
-C = (5.00 mm) .197" DIA Polyimide film Pick & Place Pad (-DH only)

-P = Pick & Place Pad (-DV 4 positions minimum) (-DH & -MT not available)

-TR = Tape & Reel (Flex Shroud options not available except -ES & -EJ)

-FR = Full Reel Tape & Reel (must order maximum quantity per reel; contact Samtec for quantity breaks)

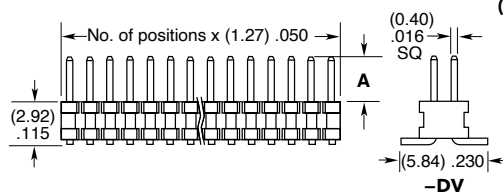
OPTION	Z
-ES	(2.57) .101
-EJ	(15.77) .621
-EC	(3.33) .131
-EP	(5.87) .231
-EL	(6.53) .257



-EX OPTION SHOWN

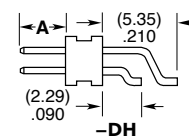


-EJ OPTION SHOWN



-DV

-MT (Styles -01, -02 & -04 only)



-DH (Styles -01, -02, -04 only)

LEAD STYLE	A
-01	(3.05) .120
-02	(1.91) .075
-03	(1.65) .065
-04	(3.81) .150
-05	(4.32) .170

