

Type 0ALD

Electric vehicle auxiliary fuses

0ALD 800/750Vdc

RoHS Compliant



Features

- DC fuse for EV/HEV/ESS
- Stud-mount, optional for other installation
- Excellent DC performance
- Design to EV fuse standard UL248-20
- Reliability performance design refer to ISO8820-8&GB/T31465.6
- Fully compliance with EU Directive 2011/65/EU and amending directive 2015/863

Physical Specifications



UK
CA CE

Materials	Body : Ceramic
	Terminals : Stud Mount, Bottom Terminal (Tin Plated Copper); Wave solder, 2-pin PCB mount (Tin Plated Copper); Wave solder, 1-pin PCB mount (Silver Plated Brass).
Marking	On Fuse :
	"bel", "0ALD", "Voltage Rating", "Current Rating"
	On Label :
	"bel", "0ALDX", "Current Rating", "Voltage Rating", "Interrupting Rating", and "  ", "  "(China RoHS compliant).

Ratings

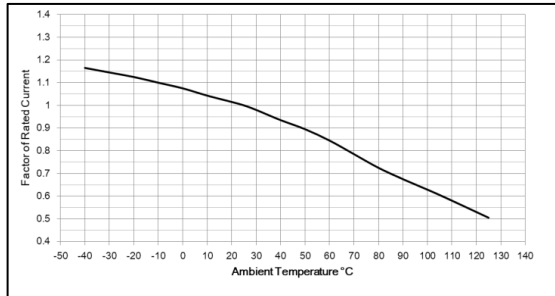
Ampere Rating / Voltage Rating	Ampere Range / Volt @ I.R. ability*
5A-40A / 800V DC 50A / 750V DC	5A-40A / 800V @ 50KA DC 50A / 750V @50KA DC
*I.R.=DC Interrupting Rating	

Electrical Characteristics

% of Ampere Rating (A)	Operating Time (Unit: sec)	
	Min.	Max.
200%	0.5	100
300%	0.1	15
500%	0.05	1

Temperature Re-Rating Curve

Normal Operating Temperature: $25^{\circ}\text{C} \pm 2^{\circ}\text{C}$
 Operating Temperature: -40°C to 125°C with proper correction factor applied.
 Chart of correction factor

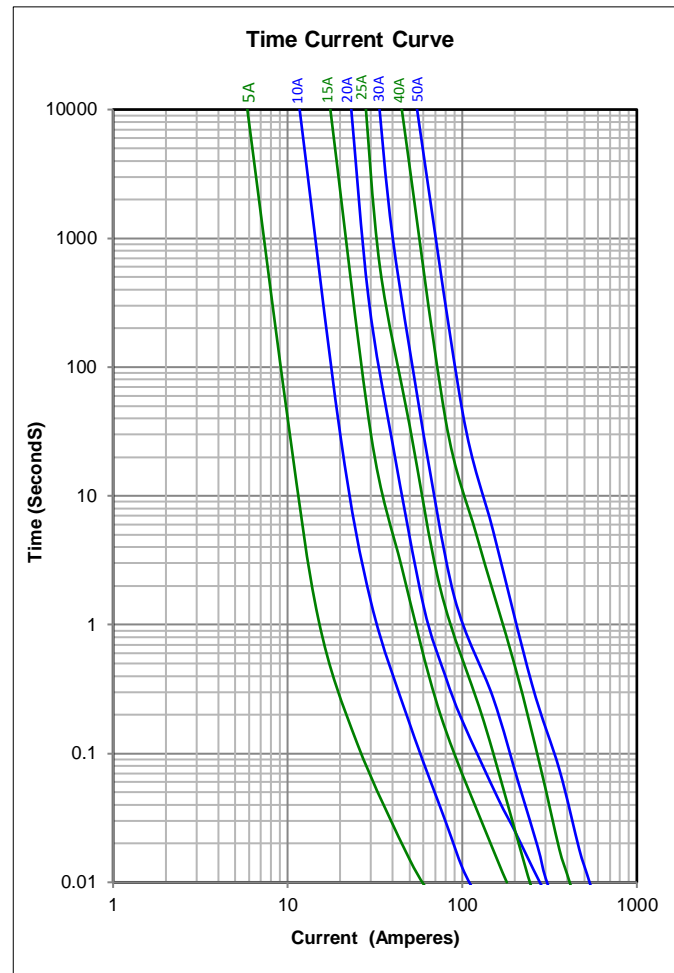


Storage Temperature: -40°C to 125°C

Soldering Parameter for Through hole series:

- Wave soldering: Solder Pot Temperature: 260°C Max.
- Solder Dwell Time: 10s Max.
- Hand-Soldering (not recommended):
- Solder Iron Temperature: $350^{\circ}\text{C} \pm 5^{\circ}\text{C}$
- Heating Time: 5s Max.

Average Time Current Curve



Electrical Specifications

Part Number	Ampere Rating	Voltage and Interrupting Ratings	Typical cold resistance (mOhms)	Typical voltage drop (mV)	Typical pre-arcing I^2t (A ² sec)
0ALDx5000-xx	5A	See Table of Ratings above for Voltage and associated Interrupting Ratings	31	190	35
0ALDx9100-xx	10A		12.5	130	120
0ALDx9150-xx	15A		7.2	140	405
0ALDx9200-xx	20A		5.2	154	1000
0ALDx9250-xx	25A		4.0	145	560
0ALDx9300-xx	30A		3.1	150	880
0ALDx9400-xx	40A		2.2	148	1760
0ALDx9500-xx	50A		1.6	155	3250

Consult manufacturer for other ratings
 * Temperature Rise : $\leq 50\text{K}$ with 70% of rated current
 * DC Cold Resistance are measured at $<10\%$ of rated current in ambient temperature of 25°C
 *Typical Pre-arcing I^2t are measured at 10In Current.



Specifications subject to change without notice

Bel Fuse Inc.
 300 Executive Drive, Suite 300,
 West Orange, NJ 07052 USA

+1 201.432.0463
 Bel.US.CS@belf.com
belfuse.com/circuit-protection

Fuse FGNO Explanation

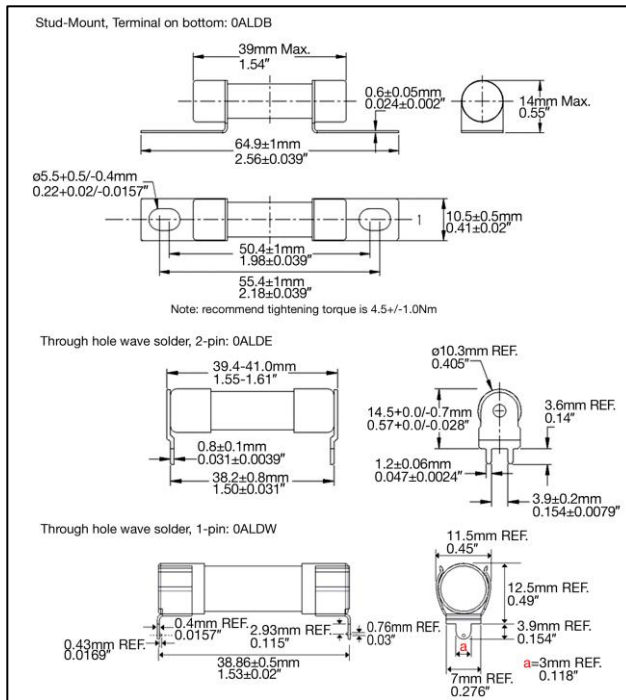
0ALD X [XXXX] -XX

0ALDB=0ALDB; 0ALDE=0ALDE; 0ALDW=0ALDW

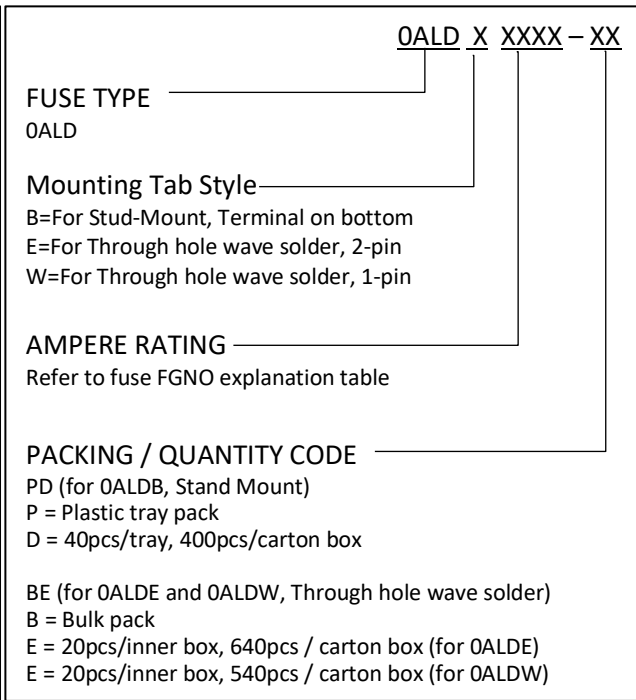
[XXXX]=Ampere Rating; XX=See Ordering Information as below

Decimal	Amps	Bel FGNO[XXXX]
5	5	5000
10	10	9100
15	15	9150
20	20	9200
25	25	9250
30	30	9300
40	40	9400
50	50	9500

Mechanical Dimensions



Ordering Information



Packaging

Packaging Option	Quantity	Packaging Code
Plastic tray pack (for 0ALDB)	40pcs / plastic tray, 400pcs (10 plastic tray) / carton box	PD
Bulk pack (for 0ALDE)	20pcs/inner box, 640pcs (32 inner boxes) / carton box	BE
Bulk pack (for 0ALDW)	20pcs/inner box, 540pcs (27 inner boxes) / carton box	BE



Specifications subject to change without notice

Bel Fuse Inc.
300 Executive Drive, Suite 300,
West Orange, NJ 07052 USA

+1 201.432.0463
Bel.US.CS@belf.com
belfuse.com/circuit-protection