

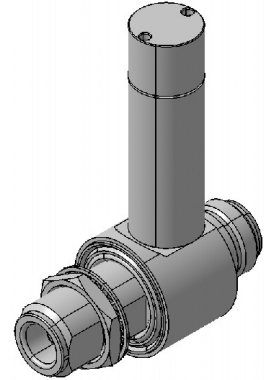
EMP Protector 3400.17.0254

Description

Quarter-wave stub technology

Benefits

The protector can also be installed reversely
Compliant to IEC 61643-21



Product Configuration

Main path connectors Port 1: unprotected, N jack (female) - Port 2: protected, N jack (female)
Mounting and grounding MH12 (bulkhead mounting), brk (bracket)

Technical Data

Electrical Data

Impedance 50 Ω
Frequency range 1000 - 1100 MHz
Return loss ≥ 20.8 dB
Insertion loss ≤ 0.1 dB
RF CW power ≤ 750 W
PIM 3rd order not specified

Surge current handling capability 50 multiple kA (test pulse 8/20 μ s)
Residual pulse energy 5 μ J typically (test pulse 4 kV 1.2/50 μ s / 2 kA 8/20 μ s) main path - protected side

Mechanical Data

Number of matings 500
Weight 170 g

Environmental Data

Operating temperature -40 °C to +85 °C
Waterproof degree IP65 (according to IEC 60529, data refer to the coupled state)
2011/65/EU (RoHS - including 2015/863 and 2017/2102) compliant

Material Data

Piece Parts	Material	Surface Plating
Housing	Brass	SUCOPLATE (R) Plating
Port 1 center contact	Copper Beryllium Alloy	Gold Plating (without Nickel underplating)
Port 2 center contact	Copper Beryllium Alloy	Gold Plating (without Nickel underplating)

Related Documents

Outline drawing DOU-00003339.1
Mounting instruction DOC-0000176104