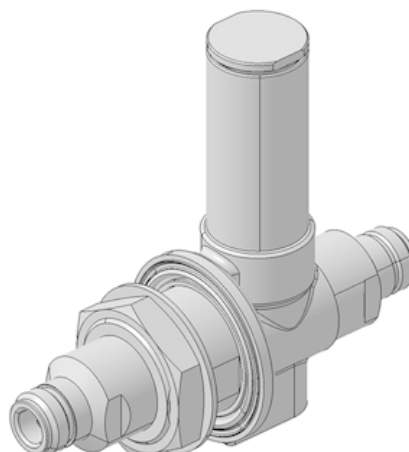


COAXIAL SURGE PROTECTOR DEVICE, Quarter-wave stub technology with integrated high-pass filter

3407.17.0023

Properties

- Residual voltage reduced by 80 % compared to standard types of series 3400
- Residual energy reduced of more than 99.9 % compared to series 3401 and 3402
- DC-blocking on protected side of the device
- Available for applications from 70 MHz to 18 GHz
- Return loss 20 dB min. and Insertion loss 0.2 dB max.



Product configuration

| | |
|-----------------------------|--|
| Main path connectors | Port 1: unprotected, N jack (female) Port 2: protected, N jack (female) |
| Mounting and grounding | MH74 (bulkhead mounting), M8 (screw), brk (bracket) |
| Side of bulkhead | protected side |
| EMP can be install reversed | YES |

Interface and material data

| | |
|------------------------------------|---|
| Housing material / plating | Brass / SUCOPLATE (R) Plating |
| Center contact, material / plating | Port 1: Copper Beryllium Alloy / Gold Plating (without Nickel underplating) |
| | Port 2: Copper Beryllium Alloy / Gold Plating (without Nickel underplating) |

Electrical data

| | |
|-----------------------------------|--|
| Impedance | 50 Ω |
| Frequency frame | 220 MHz to 450 MHz |
| Return loss typical | ≥ 20 dB |
| Insertion loss typical | ≤ 0.1 dB |
| CW power frame | ≤ 500 W |
| Residual pulse energy (typ.) | 0.03 μ J (test pulse 4 kV 1.2/50 μ s; 2 kA 8/20 μ s) |
| Surge current handling capability | 50 kA multiple (test pulse 8/20 μ s) |
| | 25 kA multiple (test pulse 10/350 μ s) |

COAXIAL SURGE PROTECTOR DEVICE, Quarter-wave stub technology with integrated high-pass filter

3407.17.0023

| Electrical remarks | |
|--------------------------------|---|
| Gas tube | No DC / shorted QW or LC |
| Electrical remarks | 450 MHz to 465 MHz, RL typ.19 dB, IL typ. 0.1 dB |
| Mechanical data | |
| Weight | 550 g |
| Mating cycles | 500 |
| Environmental data | |
| Operation temperature | -40 °C ... 85 °C |
| Storage temperature | -40 °C ... 85 °C |
| Ingress protection (IP Rating) | Mated / IP65, according to IEC 60529 |
| Thermal shock according | MIL-STD-202, Method 107, Cond. B |
| Vibration according | MIL-STD-202, Method 204, Cond. A |
| Moisture resistance according | MIL-STD-202, Method 106 |
| Comment | |
| | SPD acc. EN 61643-21 category D1, Mounting set 9075.99.0040 for bulkhead mounting seperately included |
| Ordering Information Table | |
| Item number | Item description |
| 23008638 | 3407.17.0023 |

HUBER+SUHNER is certified by ISO 9001, ISO 14001, ISO 45001, IATF 16949, AS/EN 9100 and ISO/TS 22163-IRIS. Waiver: Facts and figures herein are for information only and do not represent any warranty of any kind.
DOCUMENT PIM-PI964 / Date of publication: 06.08.2024 / uncontrolled copy