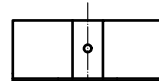
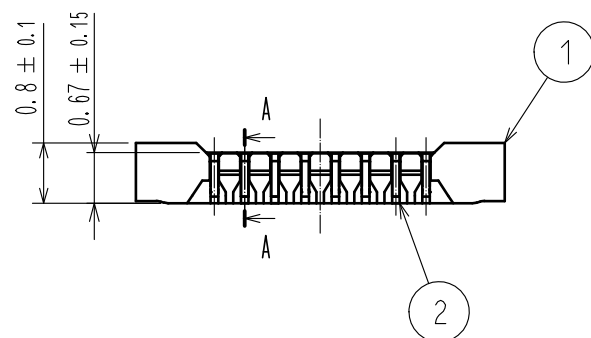
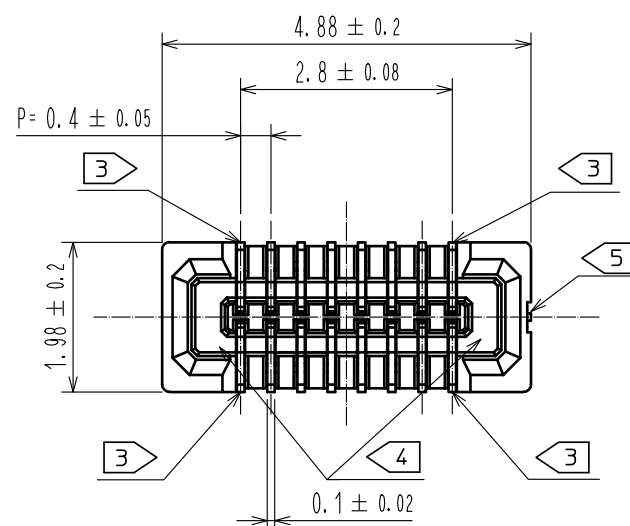


Oct.1.2024 Copyright 2024 HIROSE ELECTRIC CO., LTD. All Rights Reserved.
In case of consideration for using Automotive equipment / device which demand high reliability, kindly contact our sales window correspondents.



NOTE) 1 . ALL LEAD CO-PLANARITY SHALL BE 0.08mm MAX

2 CONTACT PLATING SPECIFICATIONS.

CONTACT AREA : GOLD $0.05 \mu\text{m}$ MIN

SMT LEAD : GOLD $0.05 \mu\text{m}$ MIN

UNDERPLATING : NICKEL $1 \mu\text{m}$ MIN

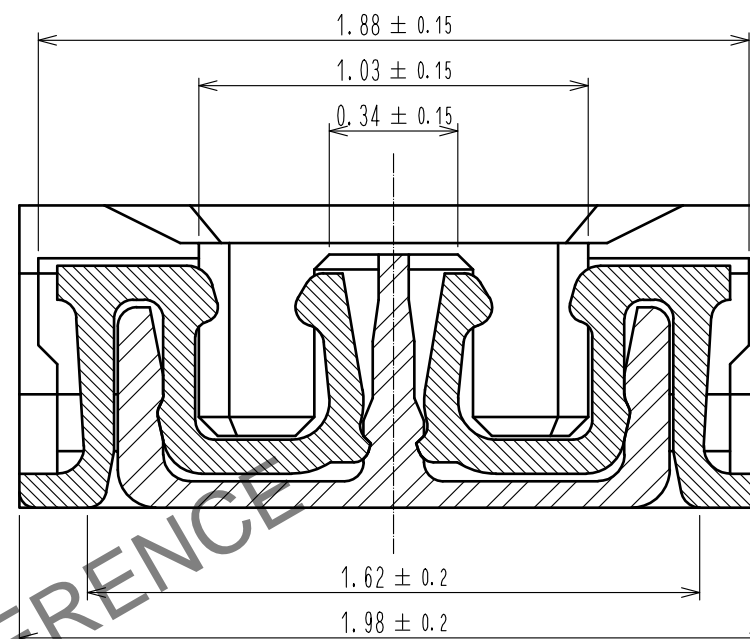
(SURFACE : SEALING)

3 EACH CONTACTS AT 4 CORNERS ARE PROVIDED FOR METAL FITTINGS AND GROUNDING PURPOSE.

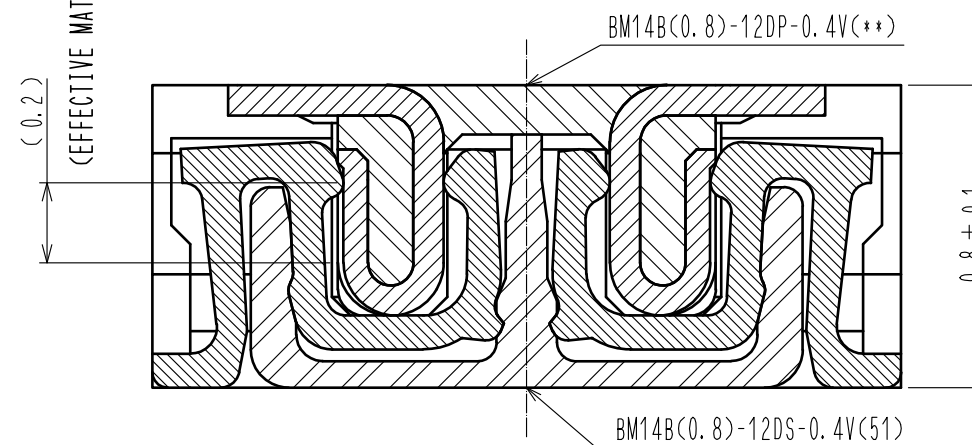
4 HRS MARK AND CAV NO. ARE INDICATED IN APPROX POSITION SHOWN.

5 GATE POSITION IS INDICATED IN APPROX POSITION SHOWN.

A-A (50:1)



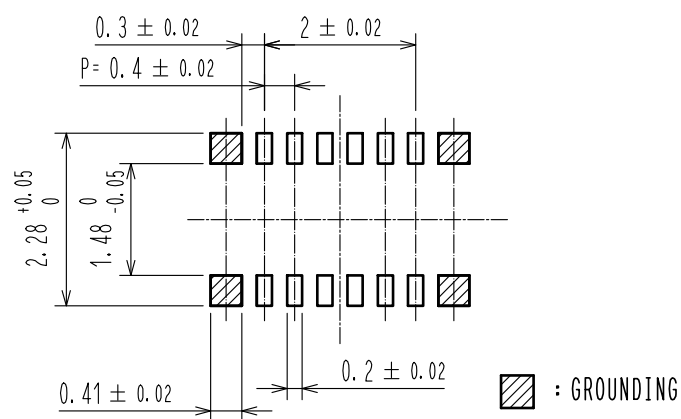
ENGAGEMENT FIGURE (50:1)



3	PS	CLEAR (ENBOSSED CARRIER TAPE)	6	PS	CLEAR (REINFORCEMENT COLLAR)
2	PHOSPHOR BRONZE	2	5	PS	BLACK (PLASTIC REEL)
1	LCP	UL94 V-0, BLACK	4	POLYESTER	CLEAR (COVER TAPE)
NO.	MATERIAL	FINISH . REMARKS	NO.	MATERIAL	FINISH . REMARKS
UNITS mm		SCALE 10 : 1	COUNT 1	DESCRIPTION OF REVISIONS	DESIGNED
HIROSE ELECTRIC CO., LTD.		APPROVED : MO. ISHIDA	15.09.30	DRAWING NO.	EDC-329242-51-01
		CHECKED : TS. MIYAZAKI	15.09.30	PART NO.	BM14B(0.8)-12DS-0.4V(51)
		DESIGNED : SH. HOSODA	15.09.30	CODE NO.	CL684-8041-4-51
		DRAWN : KR. AJITO	15.09.30		
					1/3

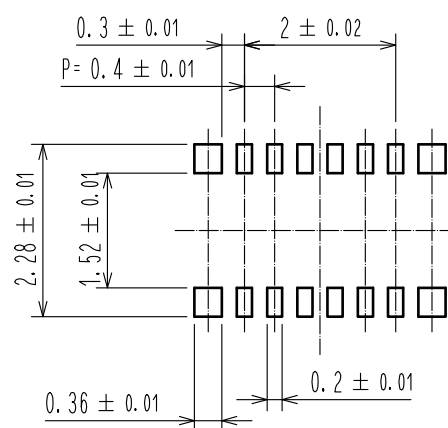
Oct.1.2024 Copyright 2024 HIROSE ELECTRIC CO., LTD. All Rights Reserved.
In case of consideration for using Automotive equipment / device which demand high reliability, kindly contact our sales window correspondents.

◆ RECOMMENDED PCB LAYOUT

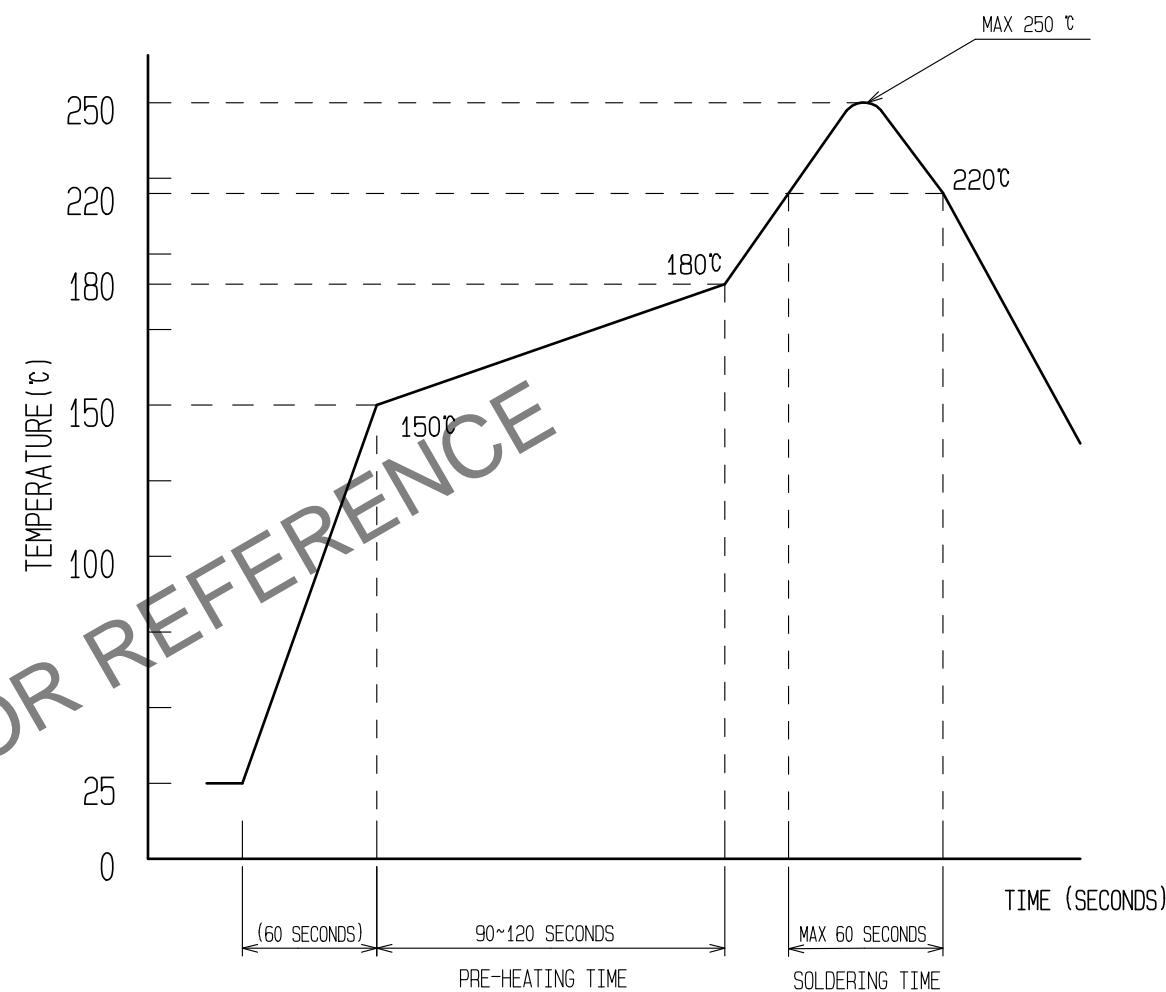


◆ RECOMMENDED METAL MASK DIMENSIONS

METAL MASK THICKNESS : $100 \mu\text{m}$



6 RECOMMENDED REFLOW TEMPERATURE PROFILE USING LEAD-FREE SOLDER PASTE.



REFLOW METHOD: IR REFLOW

NUMBER OF REFLOW CYCLES: 2 CYCLES MAX.

1) REFLOW TIME

DURATION ABOVE 220°C, 60 SEC. MAX.
(PEAK TEMPERATURE: 250°C MAX)

2) PRE-HEAT TIME

PRE-HEAT TEMPERATURE(MIN): 150°C
PRE-HEAT TEMPERATURE(MAX): 180°C
PRE-HEAT TIME: 90-120 sec.

6 THIS TEMPERATURE PROFILE IS PER THE CONDITIONS SHOWN ABOVE. ADDITIONAL FACTORS, SUCH AS SOLDER PASTE TYPE, PCB SIZE AND OTHER MOUNTED COMPONENTS COULD AFFECT THE PROFILE, THEREFORE, A THOROUGH EVALUATION OF MOUNTING CONDITION IS REQUIRED PRIOR TO PRODUCTION. TEMPERATURE IS MEASURED AT CONTACT LEAD.

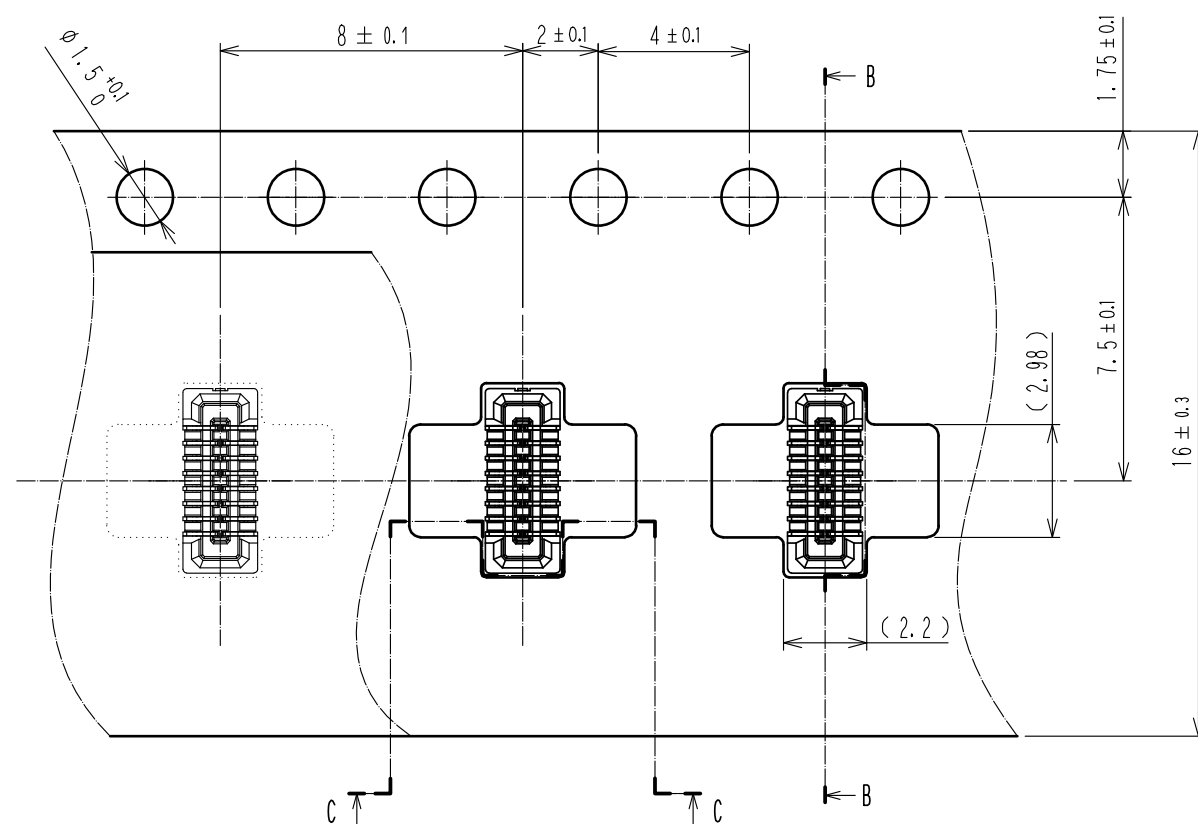
HRS

DRAWING NO.	EDC-329242-51-01
PART NO.	BM14B(0.8)-12DS-0.4V(51)
CODE NO.	CL684-8041-4-51

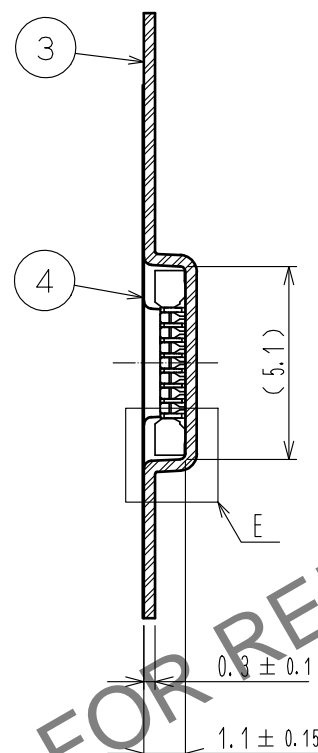
2/3

Oct.1.2024 Copyright 2024 HIROSE ELECTRIC CO., LTD. All Rights Reserved.
In case of consideration for using Automotive equipment / device which demand high reliability, kindly contact our sales window correspondents.

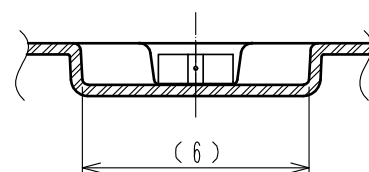
EMBOSSED CARRIER TAPE PACKAGING (5:1)



B-B (5:1)

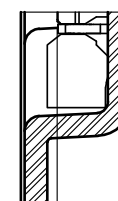


C-C (5:1)



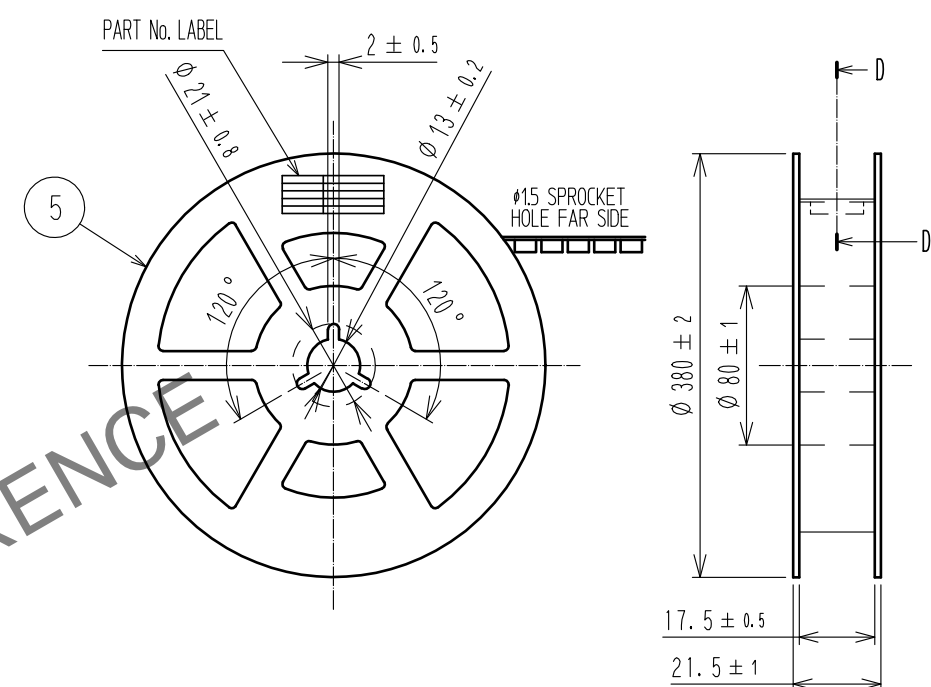
DIRECTION OF UNREELING

E(10:1)

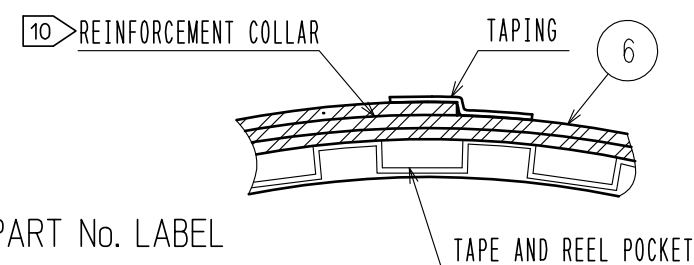


PICK UP AREA : (0.13)

STYLE AND DIMENTION OF REEL (FREE)



D-D (FREE)



DETAIL OF PART No. LABEL

SUPPLIER
QUANTITY
PART No.
CODE No.
DATE OF MANUFACTURED

製造年月日	** ** *
製品コード	CL684-8041-4-51
製品名	BM14B(0.8)-12DS-0.4V(51)
数量	8,000
納入者	ヒロセ電機(株)

7. PER REEL 8000 CONNECTORS.

8. THE DIMENSIONS IN PARENTHESES ARE FOR REFERENCE.

9. REFER TO JIS C 0806, IEC 60286-3(PACKAGING OF COMPONENTS FOR AUTOMATIC HANDLING)

10. AFTER PACKAGING, ROLL 2 METERS OF THE REINFORCEMENT COLLAR TO OUTER CIRCUMFERENCE OF TAPE AND REEL POCKET, AND TAPE DOWN AT THE END THE COLLAR.

HRS

DRAWING NO.	EDC-329242-51-01
PART NO.	BM14B(0.8)-12DS-0.4V(51)
CODE NO.	CL684-8041-4-51